



ARUNDEL LODGE behavioral health
hope re-imagined 

Newsletter

September 2022



Where to Find Us

Online



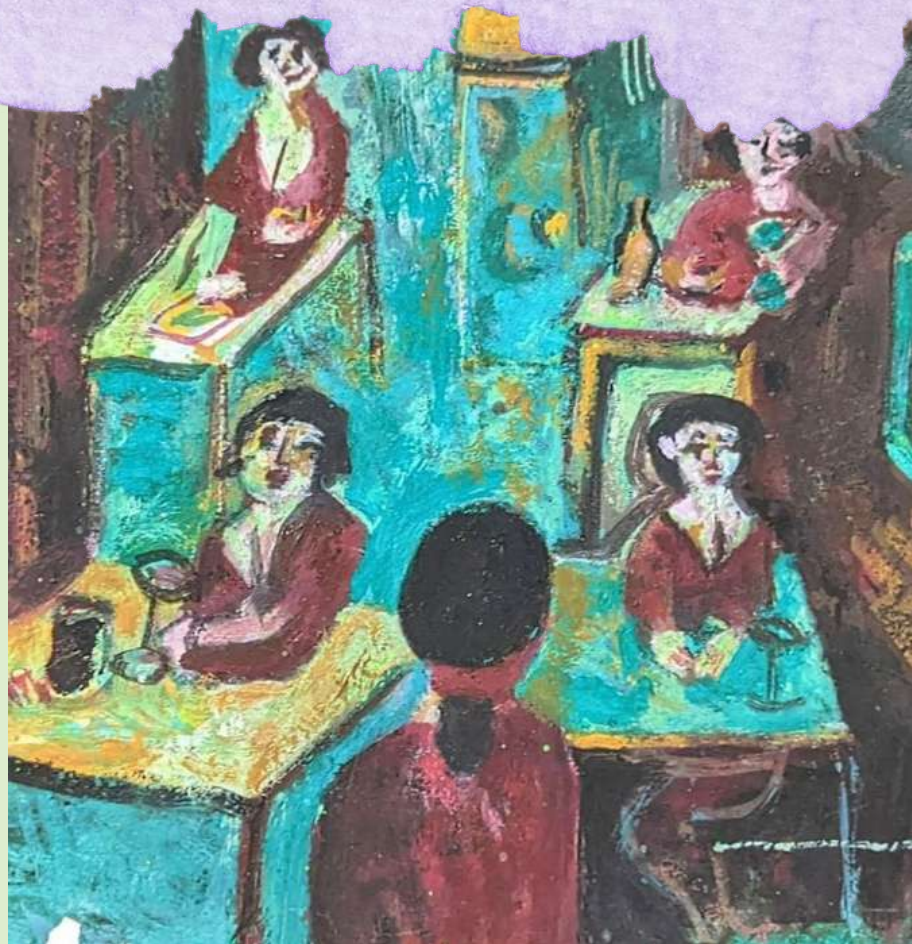
ArundelLodge.org



/arundellodge



/arundel_lodge



Contact Info

Arundel Lodge Behavioral Health, Inc.

2600 Solomons Island Road
Edgewater, Maryland 21037
(443) 433-5900

Behavioral Health Urgent Care Center

2002 Medical Parkway, Suite 460
Annapolis, Maryland 21401
(443) 590-3224

First Step Recovery Center

1819 Bay Ridge Avenue, Suite 220
Annapolis, Maryland 21403
(410) 280-2333

Open Eye Gallery

Welcoming Our New Gallery Director

Arundel Lodge is proud to welcome Anita Hagan as the new Open Eye Gallery director. Anita lives in Beverly Beach, Maryland in a small cottage on the Chesapeake Bay. She has worked in the medium of linoleum block printing for over 35 years, and has developed the unique technique of printing black ink over acrylic paint. Anita's work often employs heavy carved textures, expressive patterning and vigorous line work – inherent in the art of block printing. She is most inspired by the natural world and human portraiture. Anita joined the Open Eye Gallery as Gallery Director this spring and also teaches art classes in the Day Program. Ms. Hagan's personal work can be found in private collections across the United States and as the featured artist on the cover of the arts magazine UpStart, and in many other publications. In 2018, she was invited to print and display a piece of her work at the Museum of Fine Arts Boston. Anita is absolutely thrilled to be a part of ALI and loves watching her art students create such beautiful work.



Featured Works



"Various Images" by Colin L.
Original gouache paintings on paper
(1 in a collection of 6 small images)



"Untitled" by Bridget D.
Mixed media wood box with
found objects



"Sirens" by Christian M.
Original mixed media on canvas



"Grape Juice" by Leah L.
Mixed media on canvas



"Breaking the Flaw" by Matt K.
Mixed media on canvas

Make sure to follow the new
Open Eye Gallery Instagram!

[@OpenEyeGalleryArundelLodge](https://www.instagram.com/OpenEyeGalleryArundelLodge)

Featured Department

Development Department

Annual Gala a Sailing Success!



In June, Arundel Lodge held its annual gala, *Sailing Under the Stars*. After an amazing year of challenges and triumphs, the gala raised over **\$116,000!** This would not have been made possible without each and every person who helped along the way, from our volunteers, to our incredible donors and sponsors. There is still so much work to be done as we continue to tackle the growing behavioral health and substance abuse crisis in Anne Arundel County and across the state. We hope the rousing success of our gala has inspired you to continue your support of our beloved clients on their recovery journeys.

On behalf of the community we serve, we want to thank our amazing sponsors for their continued support and commitment.



Title Sponsor



Keel Sponsors

Beverly & Stephen Marcus

Patricia Petrou

Crew Sponsors



Friend Sponsor

Office of Bruce Bereano
Michael and Gina Baldwin
Jane and Peter Chambliss
Dirk and Jessica Haire
Bonnie Green



Port Sponsors



The Harry and Mollie Marcus
Charitable Fund

PURPLE CHERRY
PURPOSE IN ARCHITECTURE



Leeward Sponsors

Claire and Larry Fitzpatrick
Stacey and Benjamin Mednick
John and Gloria Pantelides

Steve Schuh



Upcoming Events

Art Exhibit: *Metamorphosis*



Art Exhibit: "Metamorphosis" Opening Reception Saturday, September 10th, 5-8 pm

The artists of Arundel Lodge and the Open Eye Gallery are pleased to invite you to the Opening Reception of the Art Exhibit "Metamorphosis" on Saturday, September 10, 2022, from 5:00 – 8:00 pm. This exhibit will feature paintings, sculptures, wearable art, jewelry, printmaking, and so much more – all made by the artists of Arundel Lodge!

The "Metamorphosis" theme was chosen to reflect the journeys of transformation and growth here at Arundel Lodge and is a celebration of our amazing and diverse artists. On the night of the Opening Reception, the entire first floor gallery including the art room, lobby and hallway galleries, will be decorated with art and butterflies, and the first 100 guests will receive a butterfly party favor. Wine and hors d'oeuvres will be served.

Artwork sold through Open Eye Gallery directly benefits artists by offering an income opportunity and plentiful art materials. Artists earn 80% of each sale, and 20% goes back into the program to replenish supplies.

It's a wonderful time to pick up some special gifts for the holiday season, and we hope you will join us in supporting our artists.

For more information, please email Anita Hagan, Gallery Director: ahagan@arundellodge.org or visit our new Instagram account [@openeyegalleryarundellodge](https://www.instagram.com/openeyegalleryarundellodge).

Updates

New Urgent Care Hours



Now Open Monday through Friday from 9am to 9pm!

The Arundel Lodge Behavioral Health Urgent Care Center at Luminis Health Anne Arundel Medical Center is now offering extended hours, Monday through Friday from 9am to 9pm. The clinic serves those in need of short-term urgent care to manage mental health or substance use issues. The interdisciplinary staff includes Peer Support Specialists, Mental Health Clinicians, Registered Nurses and Nurse Practitioners. The Urgent Care Clinic provides interventions for psychiatric conditions as well as coordination of care for any medical conditions with which a patient may be suffering. The clinic can also coordinate support services with ALI or our community partners and create a person centered aftercare plan in order to strengthen the path to recovery and wellness.



The clinic is located at: Hospital Pavilion South 2001 Medical Parkway Annapolis, MD 21401. It is located on the 4th floor of the Sajak Pavilion and can be accessed directly via the entrance on the 4th floor of garage D.